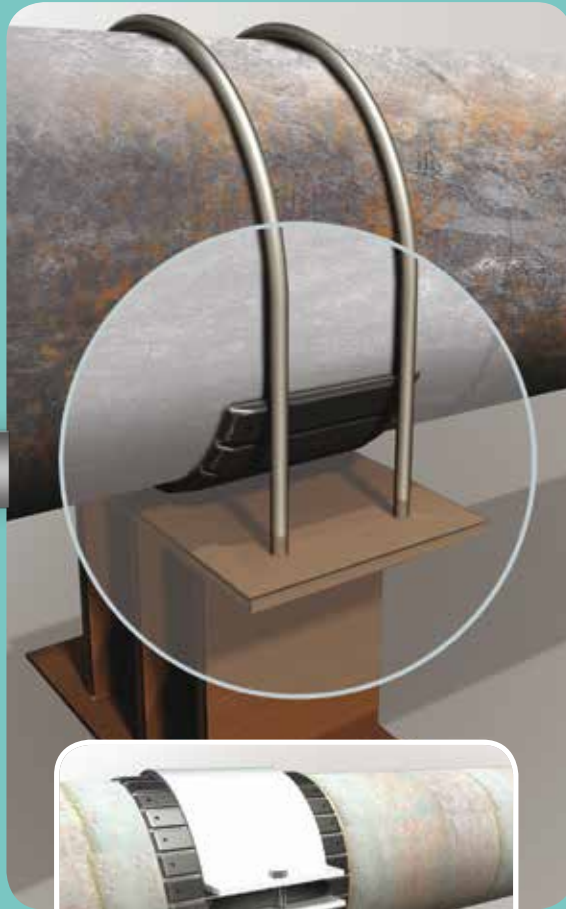




## PIPE & SUPPORT PROTECTION

On pipe

On support



4" to 56"  
-30°C to 150°C

The best way to keep your installation profitable



# ROLLERKIT®

ROLLERKIT® has been engineered according to ASME B31.1. Pads are designed to support the pipe section weight as per the maximum span length.

## What is it used for?

- Avoiding contact with trapped water on support
- Preventing from further corrosion on support
- Protecting pipe section at support area
- Avoiding galvanic effect / electric insulation
- Protecting from impact

## Where to use it?

- All kind of pipe supports
- Wide range of pipe diameters
- Friction area
- Piping, risers, sealines ...
- Onshore and offshore installations

## Which are the benefits?

- Preventive and curative uses
- Long-term service lifetime
- Quick and easy installation
- Reliable integrity
- Non-metallic solution



The box includes 3 meters of pads, sets of resin, belts, pendulum, spatula.  
**A single kit allows 17 to 28 repairs according to pipe diameter**

## IMPLEMENTATION - ROLLERKIT®



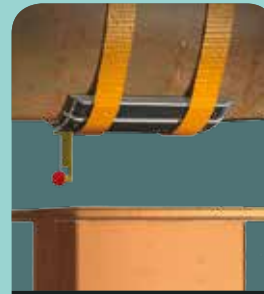
Pipe surface preparation



ROLLERKIT® preparation



Resin application



ROLLERKIT® application



Pipe on support

	ROL-28	ROL-56	ROS-28	ROS-56
Application	ONSHORE		OFFSHORE	
Ø pipe: Applicable	from 4" to 28"	from 30" to 56"	from 4" to 28"	from 30" to 56"
Size of pad: Length / Width / Thickness (mm)	30 x 160 x 8	30 x 300 x 12	30 x 160 x 8	30 x 300 x 12
Length of the roll	3 meters / 86 pads	3 meters / 86 pads	3 meters / 86 pads	3 meters / 86 pads
Fiber pad support	Glass fiber	Glass fiber	Glass fiber	Glass fiber
Maximum temperature use	150°C	150°C	50°C	50°C
Pad nature	PPS GF40	PPS GF40	PPS GF40	PPS GF40
Density	1.65g/cm3	1.65g/cm3	1.65g/cm3	1.65g/cm3
Compressive resistance	150MPa/300MPa	150MPa/300MPa	150MPa/300MPa	150MPa/300MPa
Coefficient of friction (PPS/Steel)	0.16	0.16	0.16	0.16
Izod impact (notched)	45kJ/m <sup>2</sup>	45kJ/m <sup>2</sup>	45kJ/m <sup>2</sup>	45kJ/m <sup>2</sup>
Hardness Sh D	85	85	85	85
Dielectric Strength (kV/mm)	24	24	24	24
Flammability	V-0	V-0	V-0	V-0
Support	GF 2x2 TWILL	GF 2x2 TWILL	GF 2x2 TWILL	2x2 TWILL
Fabric weight	395 g/m <sup>2</sup>	395 g/m <sup>2</sup>	395 g/m <sup>2</sup>	395 g/m <sup>2</sup>
Resin characteristics	F3X8	F3X8	P3X32	P3X32
Density	1,6 g/cc	1,6 g/cc	1,55 g/cc	1,55 g/cc